



# Setting up Your Watershed Restoration Program: An Overview

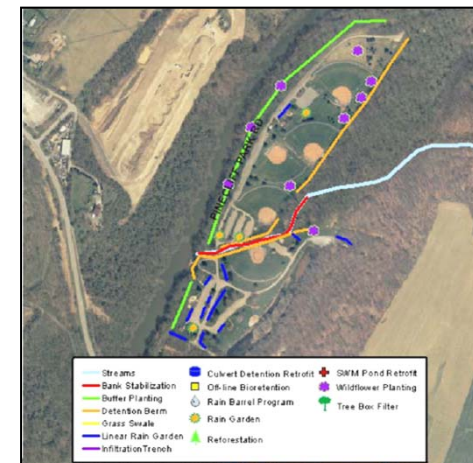
**CWEA Conference May 18, 2017**

***Lessons Learned in Restoration and Program  
Implementation:  
From MS4 Program Startup to BMPs in the Ground***



# How to Ideally Create Your Program

- Clean up your SWM data and set up a process to get good data in the future
- Map your storm sewer system
- Calculate your “baseline” and restoration obligations
- Develop a 5-year restoration and funding program
- Conduct engineering assessments
- Begin project design pipeline
- Apply for permit coverage
- Begin construction





## The Reality for Many Communities

- **You've been assigned the MS4 permit compliance!  
Read the draft permit.**
- **Realize that this new permit is a MAJOR COMMITMENT.**
- **Convince your leadership to take this seriously by showing them the part about fines and consent decrees.**
- **Go to Phase I MS4 that has done this and ask for help.**
- **Piggyback on their consultant contract to do mapping and/or a watershed assessment.**
- **Pray for grant money to fall from the sky for projects.**



## Recordkeeping Tips

**Clean up your historical stormwater files and set up a process for good records in the future**

- **Figure out what data you and others have electronically and where old plan sets are kept.**
  - Find out if you have an agreement with your County to collect/maintain SWM data. Get copies.
  - Do you have as-builts for old SWM? You need them.
  - Look at Accounting for Stormwater doc for BMP types
- **Use MDE geodatabase as basis for tracking data.**
  - Use urban BMP, stream restoration, tree planting, annual practices tables for inventory
  - Use an as-built checklist for new plan submissions



## Calculate your Restoration Baseline

**Restoration obligation = 20% of “baseline” acres that are not treated.**

- **You need to define the MS4 boundary.**
  - MDE’s definition of service area differs from what’s in the Clean Water Act.
- **Calculate the area of impervious surface in the MS4**
  - See if the County or state has data you can use.
- **Subtract SWM area treated**
  - Credit depends on design era. Pre-2002 = no credit -
  - Or calculate treatment for older facilities to see if you can get partial credit. Need data from plan set.
- **Remaining number is your baseline. Multiply by 20%.**



# Building Your Restoration Portfolio

- Do some research in-house to see what projects you may have in your portfolio already
  - Septic denitrification
  - Septic pumpouts
  - Tree planting
  - Street sweeping
  - Redevelopment
  - Projects not done for mitigation
  - Not for developer requirements
- Projects can predate the permit
- Talk to nonprofits, county, MDE and DNR to see if there are other projects





# Building Your Restoration Portfolio

- **Choose most cost-effective practices for your region:**
  - **Frederick County:** Pond retrofits for water quality, tree planting, septic pumpouts with coupon, grass swale retrofits (our soils are clay and we have fractured bedrock and karst ☹)
  - **Other places:** regenerative stormwater conveyances, street sweeping, stream restoration
- **Consider pollutant removal for TMDLs.**
  - Tree planting, stream restoration have great efficiencies and are GI practices
  - Look at agricultural streams with impervious urban above them- cheaper land for these practices and ok with MDE.
- **Partner with nonprofits to leverage funds**



## Funding Your Restoration Portfolio

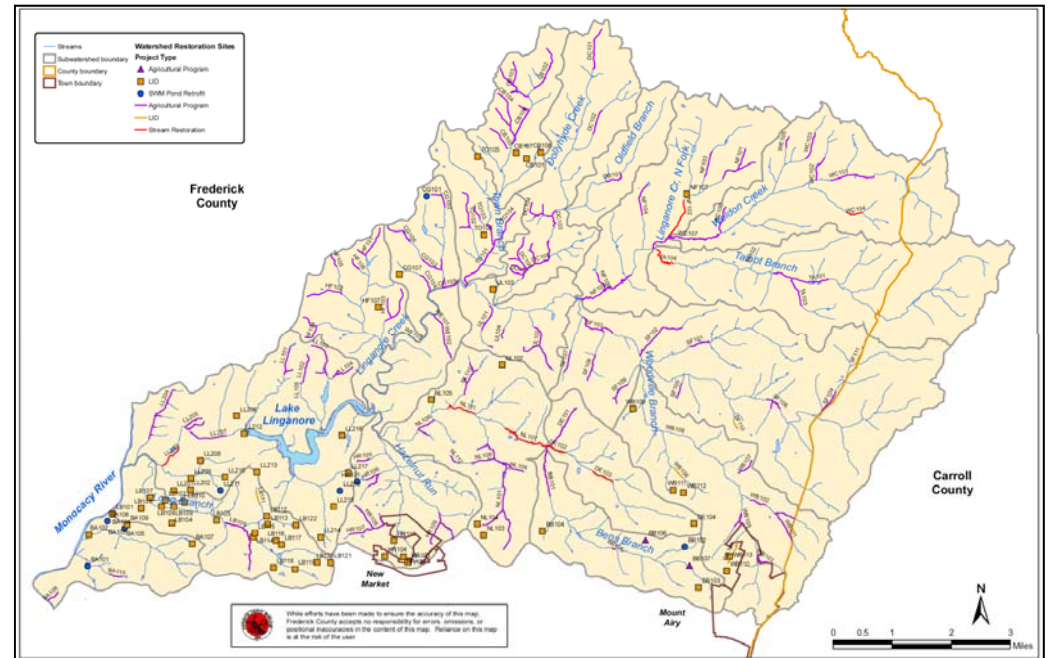
- **Set aside funds for projects NOW based on cost/ac.**
  - King and Hagan assessment generally accurate
  - Local county estimates- most counties average around \$75K/acre not counting annual practices
  - Include O&M
- **Get to know funders and their requirements**
  - Contact the Environmental Finance Center at UMD
  - Look for technical assistance grants for watershed assessments, design funds and/or consultants
    - NFWF
    - CBT
  - 319(h) and Chesapeake and Atlantic Coastal Bays Trust Fund like shovel-ready projects





## In Conclusion

- Get started NOW.
- Add retrofits to your FY' 18 budget.
- Calculate your baseline and retrofit requirements.
- Start your projects ASAP.
- Ask for help.



# Thank You!

Shannon Moore

301.600.1413

Frederick County Government

Office of Sustainability and Environmental Resources

[smoore@frederickcountymd.gov](mailto:smoore@frederickcountymd.gov)

